

# Facilities Planning Committee Report

Trinity Lutheran Church  
June 24<sup>th</sup>, 2007

## Resolution of the Congregation

- “THEREFORE BE IT RESOLVED that Trinity Lutheran Church at a special congregational meeting held on the 19<sup>th</sup> day of November 2006 authorize and charge the Congregation Council with the task of establishing a Facilities Planning Team
- “. . . to research and investigate the options available for the expansion of the congregation's current facilities in light of local zoning laws and building ordinances, as well as the opportunities and limitations associated with such options
- “. . . be authorized and instructed to meet with any agency or individual, such as the ELCA Building Consultant, architects, governmental offices, to gather as much information as possible regarding building expansion and/or relocation, and the advantages and disadvantages associated with each option, as well as a suggested timeline outlining the steps of either option

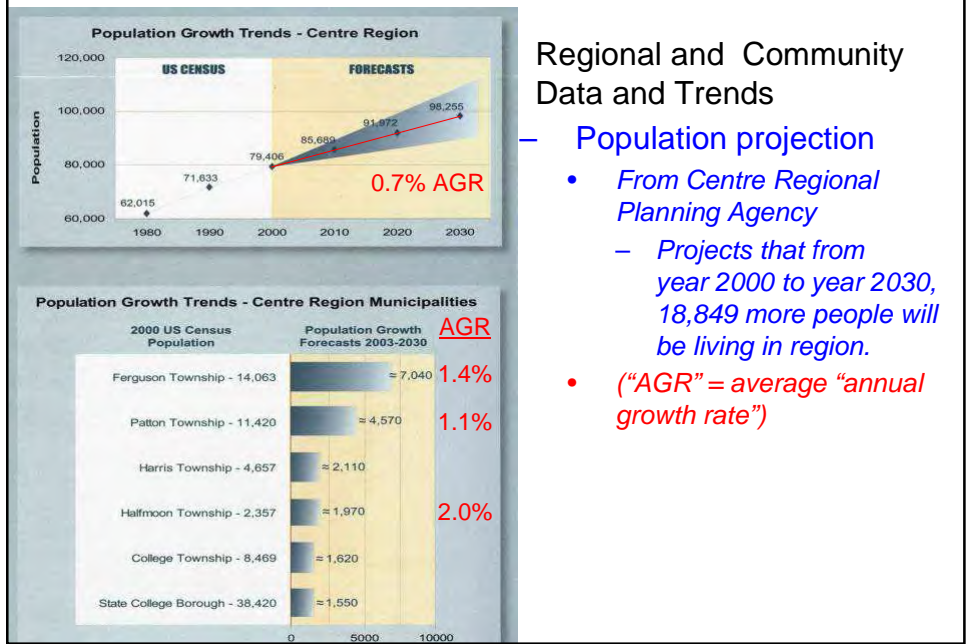
## Formation of the Facilities Team

- Glenn Lelko
- Don Leslie (chair)
- Sue Mayer
- Herb Motter
- Bob Musheno
- Ed Petersen
- Karl Raynar
- Jim Reynolds
- Todd Strawser
- John Waters

## Approach to our Study – Past, Present & Future

- Centre County and Centre Region Growth forecasts
- Regional Demographics – Religious Affiliations
- ELCA Synod Records – Census Records
- Trinity Lutheran Church Records – Attendance and Membership
- Surveys and Interviews –All Members and Lay Leaders, Council, Committee Chairs, etc.
- Review of Architectural and Site Plan Records
- Review of Zoning and Subdivision Regulations including Meetings with Patton Township Planners

# Current Conditions: Region & Community

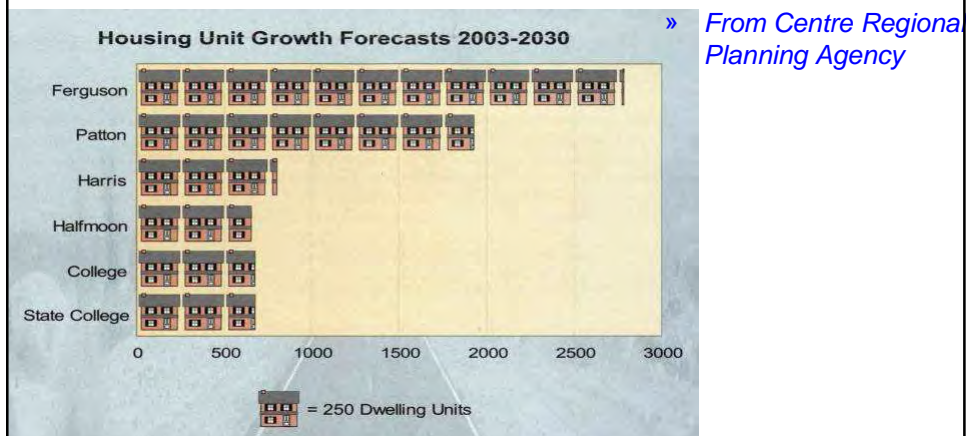


## Regional and Community Data and Trends

- Population projection
  - From Centre Regional Planning Agency
    - Projects that from year 2000 to year 2030, 18,849 more people will be living in region.
    - ("AGR" = average "annual growth rate")

# Current Conditions: Region & Community

- Regional and Community Data and Trends
  - Population projection
  - Housing projection

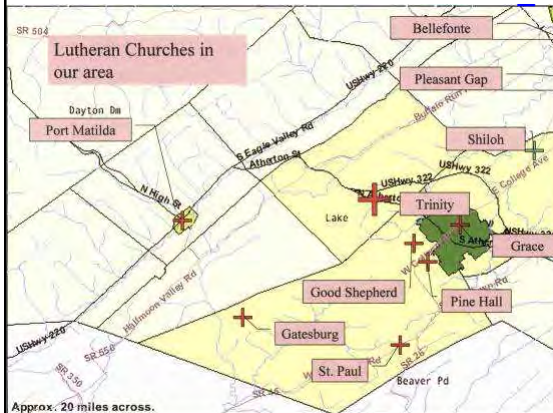


## Current Conditions: Region & Community

- Regional and Community Data and Trends
  - Population projection
  - Housing projection

### Lutheran churches in the Centre region

- Ten Lutheran churches in the immediate area (approximately a 10 mile radius)



## Current Conditions: Region & Community

- Regional and Community Data and Trends

- Census
- Housing
- Lutheran churches in the Centre region
- Religions in State College Area

**Top 15 Reporting Religious Bodies  
State College, PA**

Church, Christian, or Religious Body	Adherents (and rank)		Congregations	
	in 2000	in 1990	in 2000	in 1990
Catholic Church, The	21,240 (1)	12,216 (2)	8	7
United Methodist Church, The	11,407 (2)	12,661 (1)	50	54
<u>Evangelical Lutheran Church in America</u>	6,684 (3)	6,783 (3)	19	19
United Church of Christ	2,748 (4)	3,272 (4)	17	17
Presbyterian Church (USA)	2,491 (5)	3,009 (5)	9	9
Assemblies of God	1,585 (6)	965 (10)	3	2
Christian Churches and Churches of Christ	1,493 (7)	992 (9)	4	3
Christian and Missionary Alliance, The	1,125 (8)	899 (11)	7	7
Episcopal Church	1,095 (9)	1,208 (7)	3	3
American Baptist Churches in the USA	836 (10)	1,245 (6)	3	3
Wesleyan Church, The	827 (11)	140 (25)	3	1
Old Order Amish Church	824 (12)	1,050 (8)	10	7
Jewish Estimate	700 (13)	550 (13)	2	0
Church of Jesus Christ of Latter-day Saints, The	647 (14)	453 (15)	3	1
Baptist General Conference	615 (15)	132 (26)	1	1

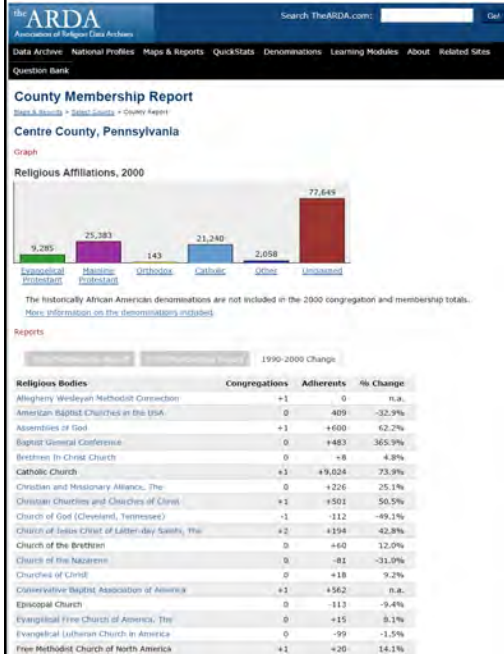
Metropolitan Population, 2000 Census: 135,758  
 Percent of Population Claimed by Reporting Groups: 42.8%

National Average: 50.2% claimed

Reporting Groups (149 possible): 37 (35 of 133 in 1990)  
 Total Reported Adherents: 58,109 (49,110 in 1990)  
 Total Reported Congregations: 178 (165 in 1990)

The 2000 and 1990 data are based on the data of the 2000 census, Centre County, PA. The newly published book, *Religious Congregations and Membership in the United States 2000* includes a CD that allows users to determine such lists for any selected group of counties. Source: *Religious Congregations and Membership in the United States 2000: Churches and Church Membership in the United States, 1990*. Both studies, copyrighted by the Association of Statisticians of American Religious Bodies, are published by the Glenmary Research Center, Nashville, Tenn. More information is available at [www.glenmary.org](http://www.glenmary.org).

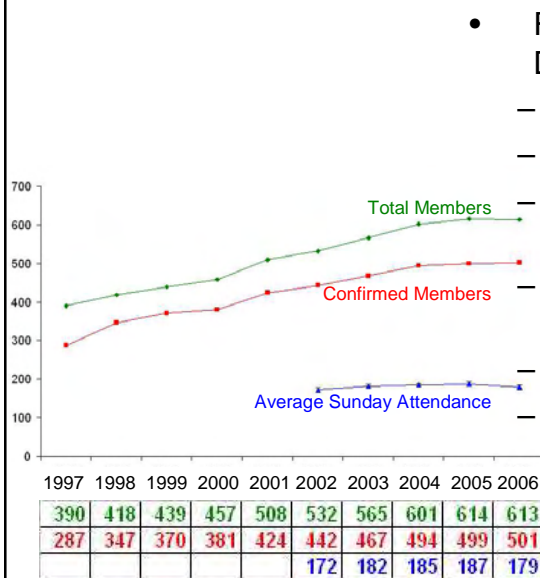
# Current Conditions: Region & Community



## Regional and Community Data and Trends

- Census
- Housing
- Lutheran churches in the Centre region
- Religions in State College Area
- Centre County Affiliations
  - regionally, ELCA membership decreased by 1.5% from 1990-2000
  - a large number of people report no religious affiliation

# Current Conditions: Trinity Lutheran Church



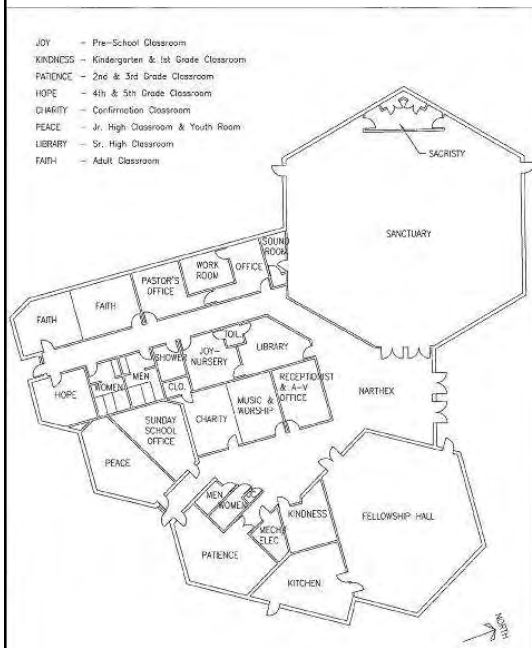
- Regional and Community Data and Trends
  - Census
  - Housing
  - Lutheran churches in the Centre region
  - Religions in State College Area
  - Centre County Affiliations
  - Trinity Lutheran Church
- Membership 1997-2006
- Average Sunday Service Attendance 2002-2006

## Current Conditions: Trinity Property



- R-2 Zoning
- Property lines
- Setback lines
- Building Coverage
- Impervious Surfaces
- Storm Water Management: Limitations & Restrictions

## Current Conditions: Building



- Sanctuary
- Meeting Rooms, Sunday School Rooms, Support Rooms
- Storage
- Fellowship Hall
- Kitchen
- Pastoral and Staff Offices

## Trinity Lutheran Church Feedback

- Conducted two surveys and one set of interviews
  - Survey Congregation
    - All Persons Over Age 12 - approx. 130 surveys returned
  - Survey Lay Leaders, Council, Committee Chairs/Facilitators
    - approx. 20 surveys conducted
  - Interviews with Lay Leaders, Council, Committee Chairs/Facilitators
    - approx. 20 interviews conducted

## Trinity Lutheran Church Feedback

- [Survey Congregation](#)
- Parking: 79% = parking capacity is adequate
  - 91% of respondents are willing to park on adjoining streets if necessary
- Sanctuary: 80% = seating capacity is adequate
  - 40% of respondents would like to see another worship service scheduled.
- 93% of respondents attend TLC programs in addition to worship services
  - Have you experienced any scheduling issues ....?
    - 12% = experience scheduling conflict problems
  - Which one of the following statements best describes the room space, for the programs that you participate in, at Trinity Lutheran Church?
    - 55% = currently adequate and next 3 years.
    - 28% = currently adequate, inadequate within 3 years.
    - 17% = currently inadequate, inadequate for the next 3 years.

# Trinity Lutheran Church Feedback

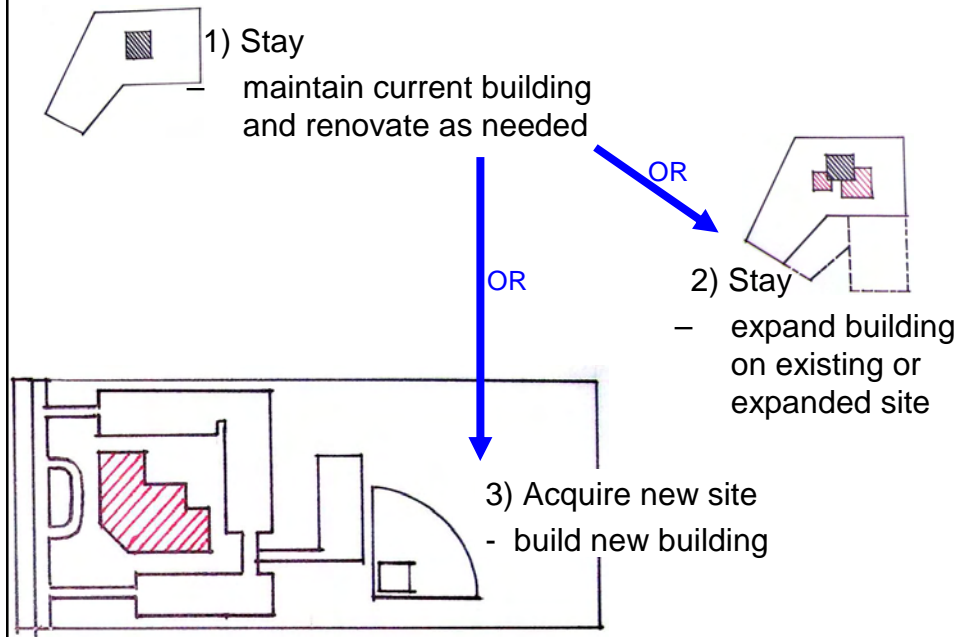
## Survey Lay Leaders, Council, Committee Chairs/Facilitators

- Interviews with Lay Leaders, Council, Committee Chairs/Facilitators
  - Have you experienced any scheduling issues ....?
    - 70% (vs. 12%) = experience scheduling conflict problems
  - Which one of the following statements best describes the room space, for the programs that you facilitate, at Trinity Lutheran Church?
    - 30% (vs. 55%) = currently adequate and next 3 years.
    - 50% (vs. 28%) = currently adequate, inadequate within 3 years.
    - 20% (vs. 17%) = currently inadequate, inadequate for the next 3 years.
  - Comments and Suggestions:
    - Program scheduling and location concerns
    - Kitchen storage space needs to be increased
    - Kitchen appliances need to be replaced with larger units
    - Fellowship Hall capacity need to be increased
    - Music programs need more meeting and storage space

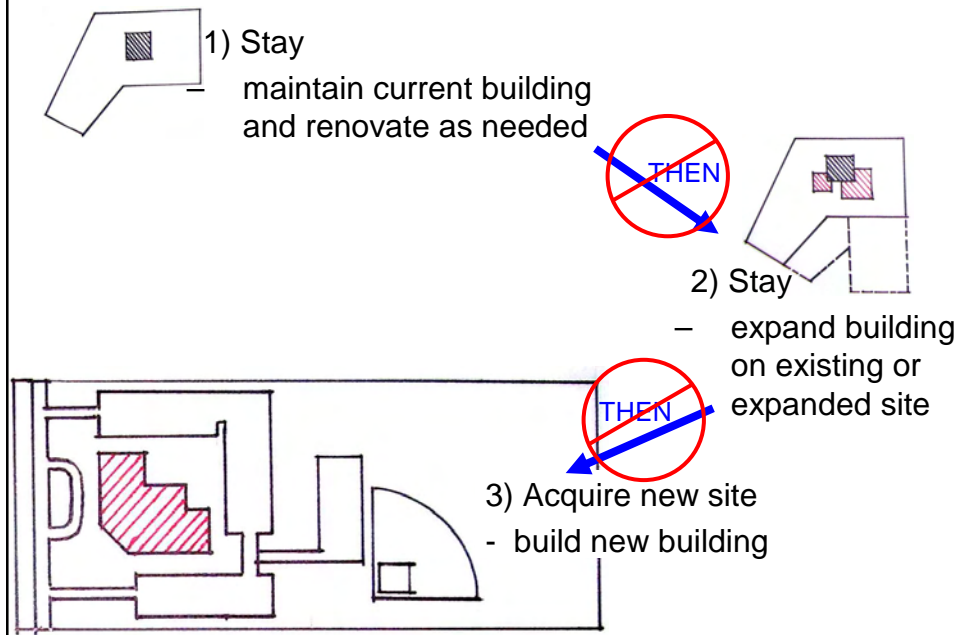
## Going Forward: Options



## Going Forward: Three Options



## Going Forward: Three Options



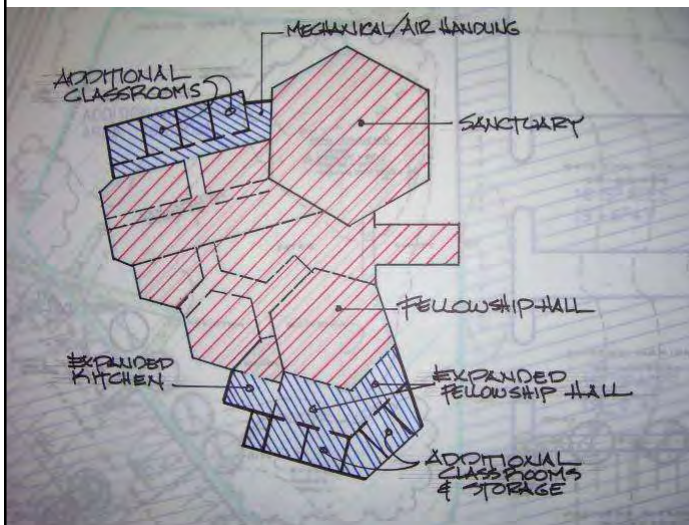
## Going Forward: Expand on site



- Additional Building Lot Coverage Possible
- Additional Parking Possible
  - Permeable Paving Suggested
- Impervious Surfaces Restriction
  - Limited, but is negotiable in our conditional use situation

## Going Forward: Expand on site

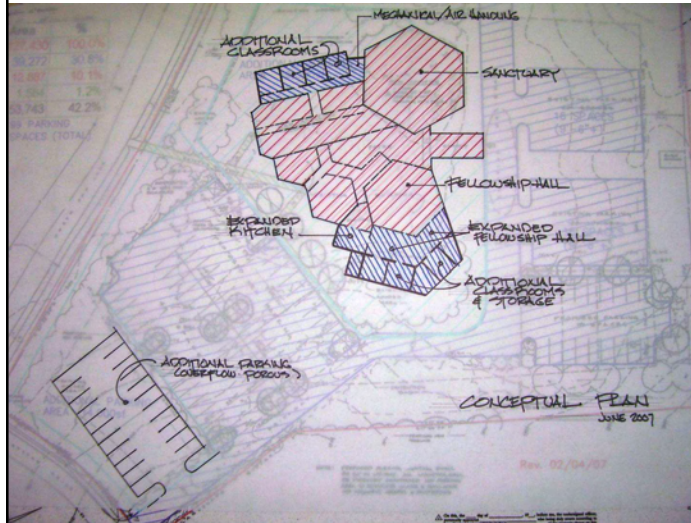
### Example:



### One possible scenario (of many):

- Add 4387 ft<sup>2</sup> (34% increase) to building
- building coverage increases from 10.1% to 14% (< 25% allowable)

## Going Forward: Expand on site



One possible scenario (of many) -continued:

• Add 6000 ft<sup>2</sup> (15% increase= 22 spaces) to parking

• Parking coverage increases from 30.8% to 37%

• Impervious surfaces increase from 42.2% to 49.0% (< 50% allowable)

## Going Forward: Build on a new site



- What kind of church is right for us?
- We would need to pray, discuss, and then make a decision together



## Recommendation to Church Council

- Continue Strategic Planning Process – follow prescribed strategic planning steps
  - Consult with design professionals
    - develop conceptual expansion plan
    - determine alternate possibilities
    - explore limitations and develop a cost estimate.
  - Develop costs comparisons and impact comparison of the **three** options
    - **1)** Stay and maintain current building and renovate as needed
    - OR**
    - **2)** Stay and expand existing building on existing or expanded site
    - OR**
    - **3)** Acquire new site and build new building